



Sony Ericsson

Component Replacement

- electrical -



Vivaz Pro

U8i, U8a

CONTENTS

1	Replaceable Components	3
2	Component Placing.....	5
3	Repair Actions	6
	3.1 Shield Can Fence Modifications	6
	3.2 Additional Repair Info	7
4	Revision History	10

***For general information about electrical repair related issues, refer to
1220-1336: Generic Repair Manual - electrical***



1 Replaceable Components

EXPLANATION OF ABBREVIATIONS USED IN THE COLUMN 'COMMENTS' BELOW

COMPONENT LOCATION

P = Primary side

S = Secondary side

MOISTURE SENSITIVITY LEVEL

MSLX (X = 1, 2, 2A, 3, 4, 5, 5A or 6)

For more information on moisture sensitivity levels:

Refer to 1220-1336: Generic Repair Manual – electrical, section 'Moisture & Baking'!

REPAIR METHOD

HA = Hot Air (removal & mounting)

ST = Soldering Tool (removal & mounting)

HA/ST = Hot Air for removal - Soldering Tool for mounting

BGA = BGA Station

BH = Bottom Heater

ADDITIONAL INFORMATION

⇒1 (2,3,4, etc.) = Proceed to 'Additional Repair Info' for further instructions in the indicated section(s).

CALIBRATION

C = Calibration of the phone is required after replacing the component

Calibration to be done by authorized centers only!



Component Replacement Repair Drawing Electrical/

Position	Component	Part no.	Comments
B2000	Crystal 32.768 kHz	1000-8271	S HA C
B4000	Vibrator Bar Sanyo SMD	1208-0601	P BGA ⇒ 1
B5500	Microphone	1210-7410	P BGA ⇒ 2
C3011	Capacitor Ceramic 1,0 uF +/-10% 25,0 V K	1000-0076	P HA
L1000	Ind Chip 2,2 uH 20% K2520	1200-2913	S HA
L1501	Inductor 4.3 nH ±0.2nH	1206-6326	P HA ⇒ 3
L3000	Ind Chip 0, H	1200-6898	P HA ⇒ 4
L3003	Inductor	1200-0317	P HA
L3004	Inductor	1200-0317	P HA
L3005	Ferrite B 0, 0, 220ohm 0603 2A 0.05ohm Bead	1001-1896	P HA
L3006	Ind Chip 22.0 uH 20% 1608(0603)	1207-2753	P HA
L3007	Ind Chip 22.0 uH 20% 1608(0603)	1207-2753	P HA
L4000	120ohm 0603 2A 50mohm Bead	1000-0118	S HA
L4002	Inductor Wirewound 4.7 ?H	1200-2190	S HA
L4010	Ind WW 10.0 uH	1000-3331	P HA
L5510	EMI FILTER	1000-2618	P HA ⇒ 5
L5511	Inductor	1200-0317	P HA ⇒ 5
L5512	Inductor	1200-0317	P HA ⇒ 5
N1000	IC Lin 16-pin WLP (2x2mm)	1227-3531	S HA
N1401	Mod PA WLAN 3.0 x 3.0 x 0.50mm	1222-5645	S HA
N1403	IC Vreg	1232-0901	S HA
N1500	ASIC GPS5350	1201-7557	P HA
N2620	IC IF CSP	1204-7197	S HA
N2800	IC	1234-3967	S HA
N3004	IC Lin	1224-1925	P HA ⇒ 4
N3005	IC Lin CSP-9	1216-7892	P HA
N4003	IC Voltage Regulator	1204-5903	S HA
N4153	IC Vreg PLP1010-4	1201-1568	S HA
N4180	IC WL-CSP 6x4 balls	1212-7979	P HA
N5506	IC Amplifier 500mA	1203-4594	S HA
V2610	LED White SideFire	1231-4440	S HA
V2611	LED White SideFire	1231-4440	S HA
V2806	LED Red + Green Everlight 17-223 2.0x1.0	1203-6557	P HA
V3011	Diode 80, V 1SS362FV	1200-2364	P HA ⇒ 4
V3012	Diode	1201-8440	P HA
V3013	Diode	1201-8440	P HA
V4180	MOSFET & Schottky Diode	1201-3866	P HA
X1000	Conn Coax Receptacle 0p test switch	1221-6477	P HA
X1090	Conn Leaf Spring 1p	1000-8912	S HA
X1401	Conn Coax Receptacle 0p test switch	1221-6477	P HA
X2100	Conn BtB Receptacle 34p Mating height 1.5mm	1230-9093	P BGA ⇒ 7
X2820	Conn Other Receptacle 24p	1210-3896	P BGA ⇒ 7
X2900	Conn BtB Receptacle 54p Panasonic A4S	1230-7680	S BGA ⇒ 8
X2901	Conn FPC Receptacle 17p Conn , 17pin ZIF connector	1230-9040	S BGA ⇒ 9
X3001	Conn USB micro B Receptacle 5p front dip	1224-0652	P BGA
X4000	Conn Pogopin Plug 5p	1226-6294	P BGA ⇒ 10
Z1402	Filter SAW 2.4 GHz 1.35*1.05*0.5	1217-3397	S HA
Z1500	Filter SAW 1.575 GHz	1231-0570	P HA
Z1501	Filter SAW 1,575 GHz	1211-5714	P HA ⇒ 3
Z3000	Filter Ceramic 0.0	1227-0418	P HA ⇒ 6



2 Component Placing

To access the Component Placing document, double-click the icon below.
Applicable for on-screen viewing only – icon not shown on hard-copies.





3 Repair Actions

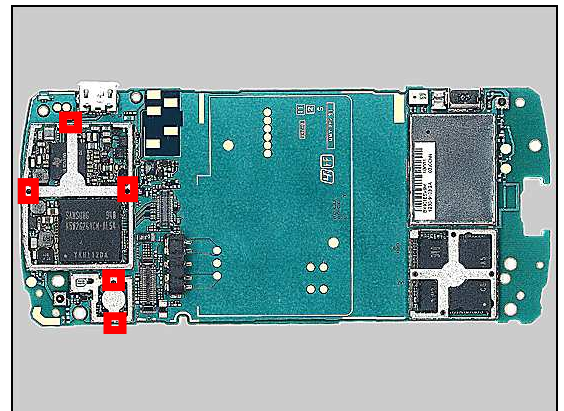
Refer to the Tools Catalogue/Matrix for information about equipment required for PBA repair!

3.1 Shield Can Fence Modifications

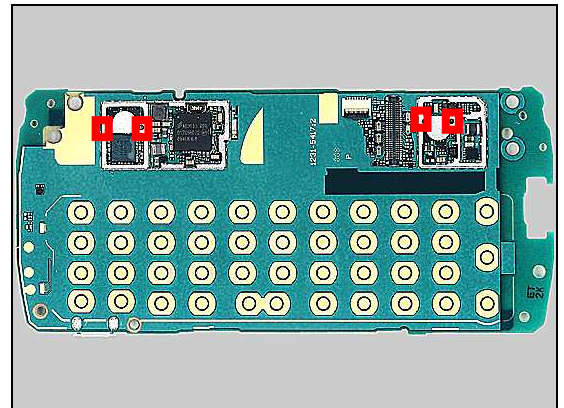
Refer to the pictures below of the primary and secondary sides for repairs that require the Shield Can Fence to be modified:

- the shield can lid has to be removed
- the red symbols show where the frame should be cut to enable rework
- after rework the height of the frame should not be affected
- it should not be visible that rework has been carried out when the lid has been mounted

Primary side



Secondary side





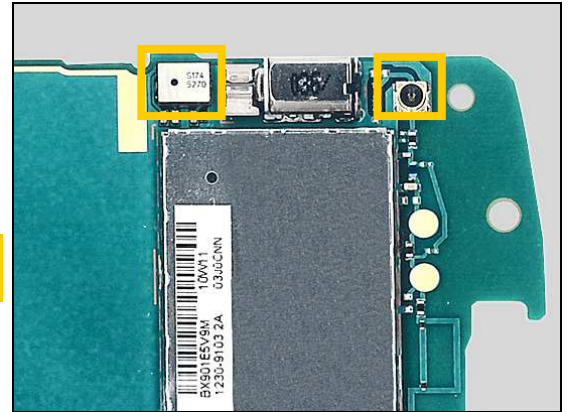
Repair Actions

3.2 Additional Repair Info

1

B4000

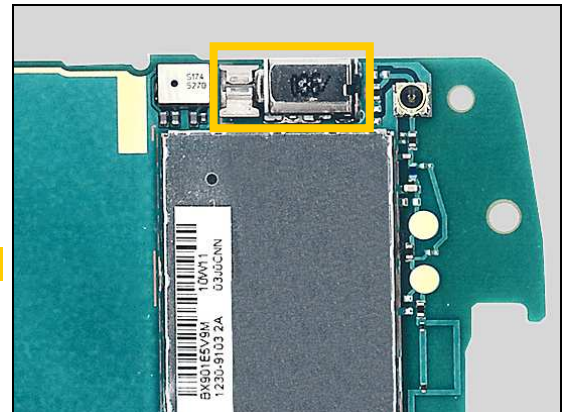
Protect the Micphone and the connector with capton tape!



2

B5500

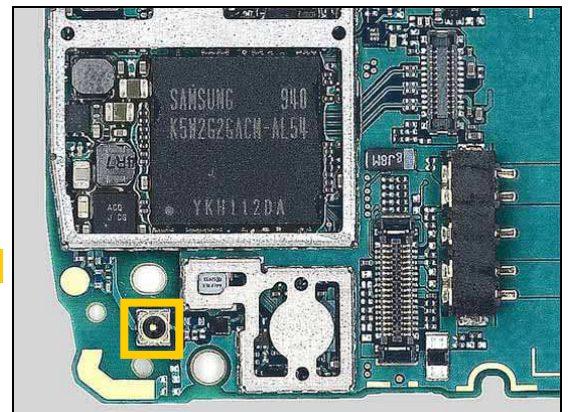
Protect the Vibrator with capton tape!



3

L1501, Z1501

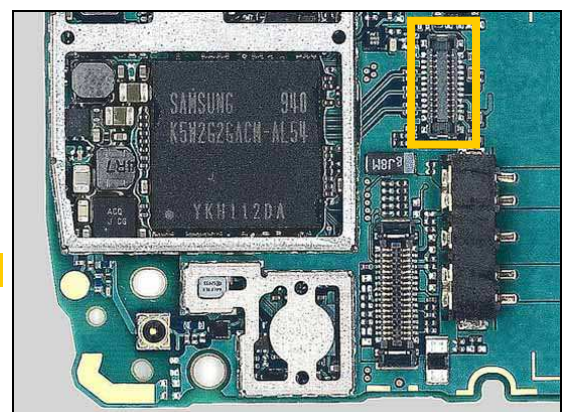
Protect the connector with capton tape!



4

L3000, N3004, V3011

Protect the connector with capton tape!



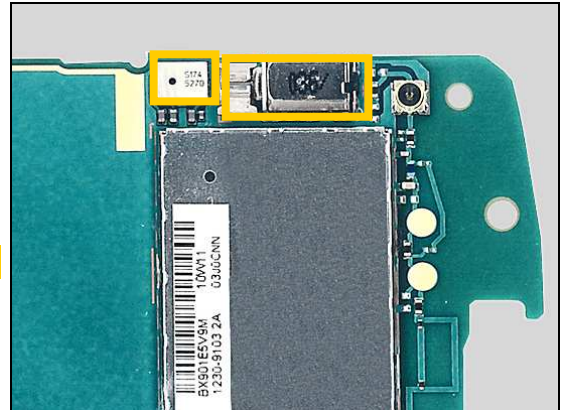


Repair Actions: Additional Repair Info

5

L5510, L5511, L5512

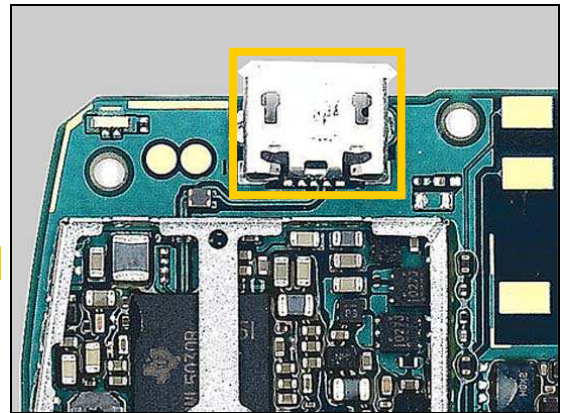
Protect the Micphone and the Vibrator with capton tape!



6

Z3000

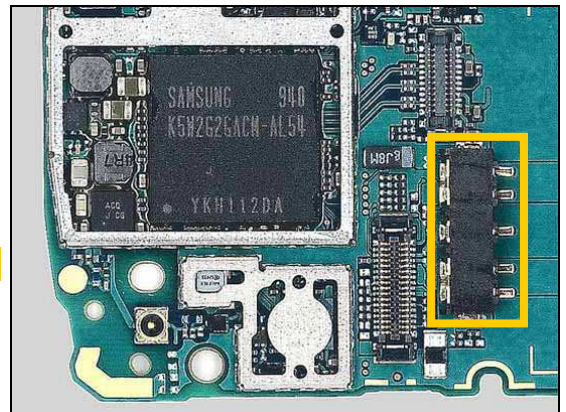
Protect the Micro USB connector with the capton tape!



7

X2100, X2820

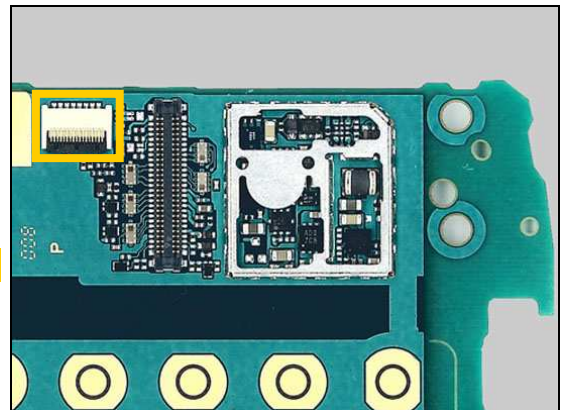
Protect the connector with the capton tape!



8

X2900

Protect the ZIF connector with the capton tape!



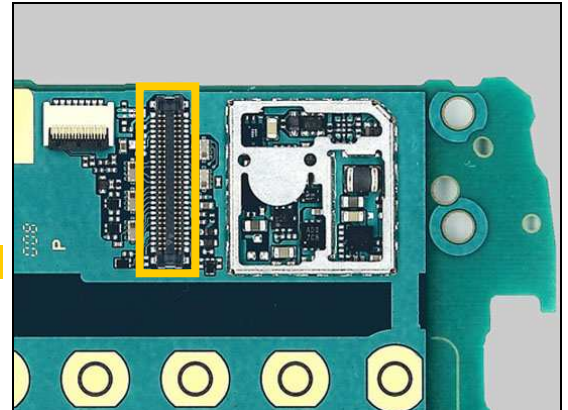


Repair Actions: Additional Repair Info

9

X2901

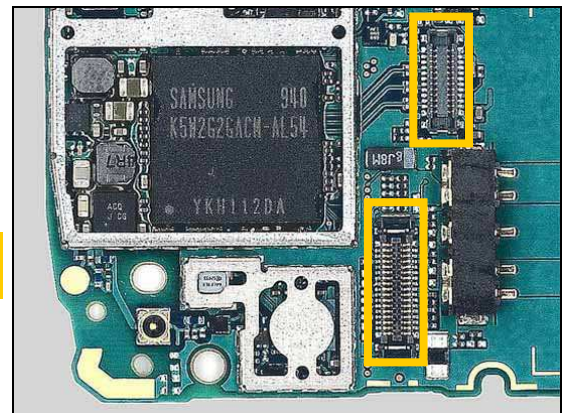
Protect the BtB connector with capton tape!



10

X4000

Protect the BtB connector and the connector with capton tape!





4 Revision History

Rev.	Date	Changes / Comments
1	2010-May-17	Initial release
2	2010-Jul-1	Remove N1001 from Part List
3	2010-Sep-8	Add L3006,L3007,X1000,X1401